

A Symposium in the NIC of Time: Advancing Information Sharing in California and Beyond

Silicon Valley Regional Data Trust: A Scalable Model for Improving Educational Outcomes and Well-Being for Children and Families

- **Richard Gold, Senior Consultant, Stewards of Change Institute**
- **Steve Ambrosini, Senior Consultant, IJIS Institute**
- **Rebecca A. London, PhD, Assistant Professor, Sociology Department, Faculty Director, Student Success Evaluation and Research Center, UC, Santa Cruz**
- **Marcy Lauck, Founder and Co-Director, Silicon Valley Regional Data Trust; Director of Data Governance, Santa Clara County Office of Education**

Silicon Valley Regional Data Trust



Investing in the Future of Children, Families and Communities

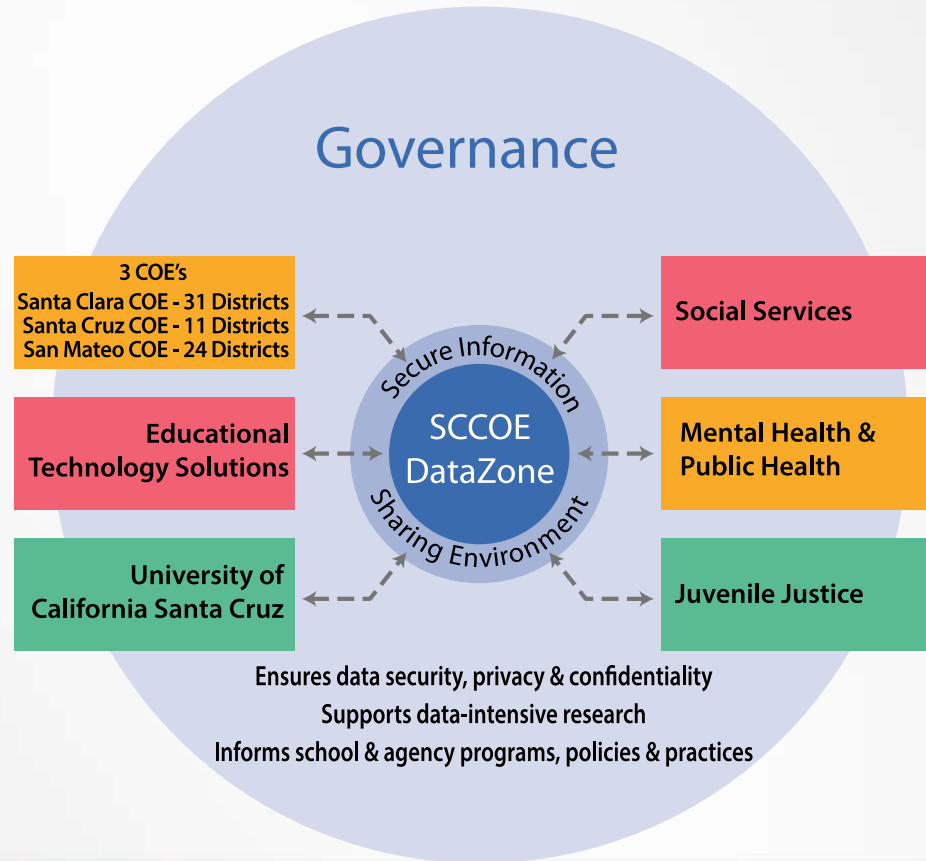
Rod Ogawa, Moderator
Richard Gold
Steve Ambrosini
Rebecca London
Marcy Lauck



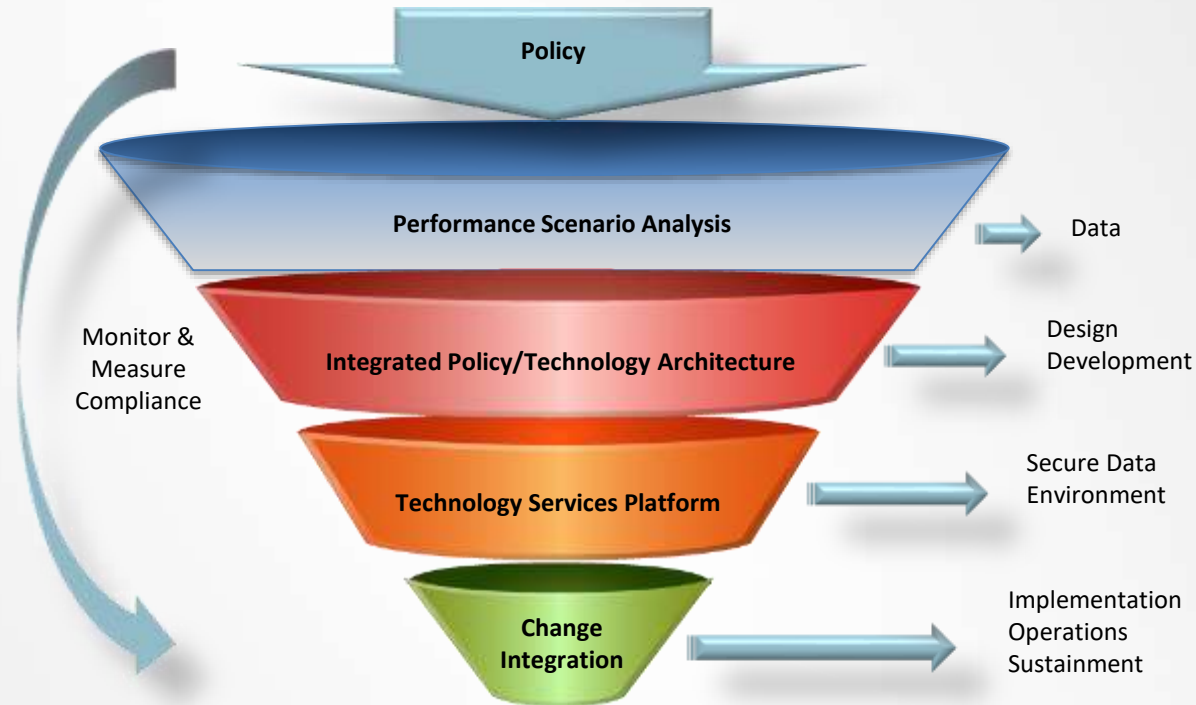
Santa Clara County
Office of Education



Silicon Valley Regional Data Trust



SVRDT: Integrated Policy & Technology



Progress to Date

- ◆ Chan-Zuckerberg Initiative Support
- ◆ AB 597
- ◆ Interagency Agreement and EMOU
- ◆ Secure Data Environment
 - ◆ Implementation, Beta Release Q1 2018
- ◆ CAHHSA – SVRDT Symposium: March 26-27
- ◆ 250,000 students, 30 districts in SCCOE's DataZone



SVRDT Legal/Policy Architecture

Richard Gold

Stewards of Change

Senior Consultant, SVRDT



Policy / Legal Agreements

- ◆ Data Elements
- ◆ Use Cases
- ◆ Multi-Agency Agreement
- ◆ Universal Consent
- ◆ Enterprise Memorandum of Understanding



SVRDT Technology Architecture

Steve Ambrosini

IJIS Institute

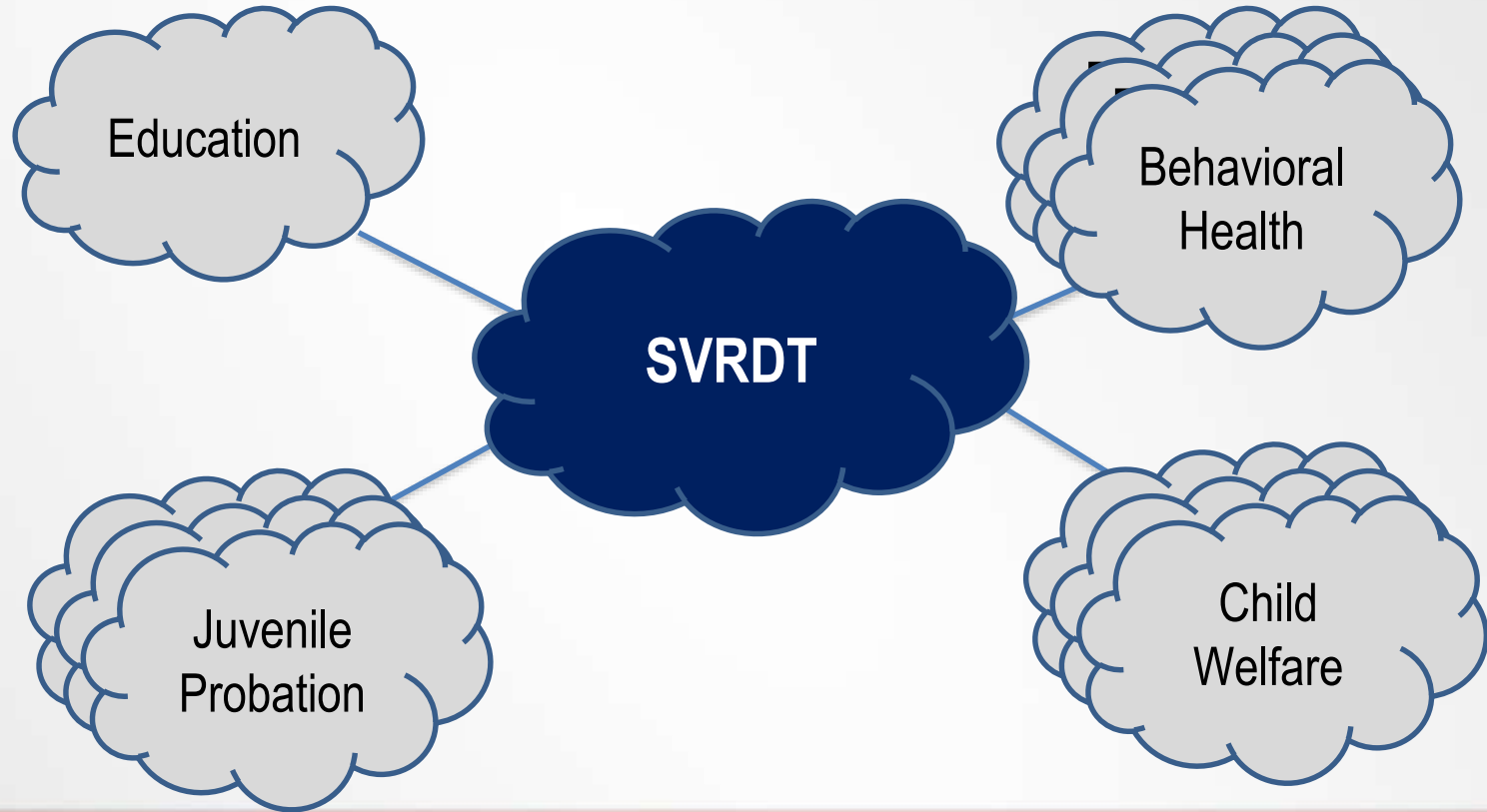
Senior Technology Architect, SVRDT



Santa Clara County
Office of Education



Connecting Trusted Data Environments



Architecture and Design Principles

Architecture & Design Principles Policy/Legal

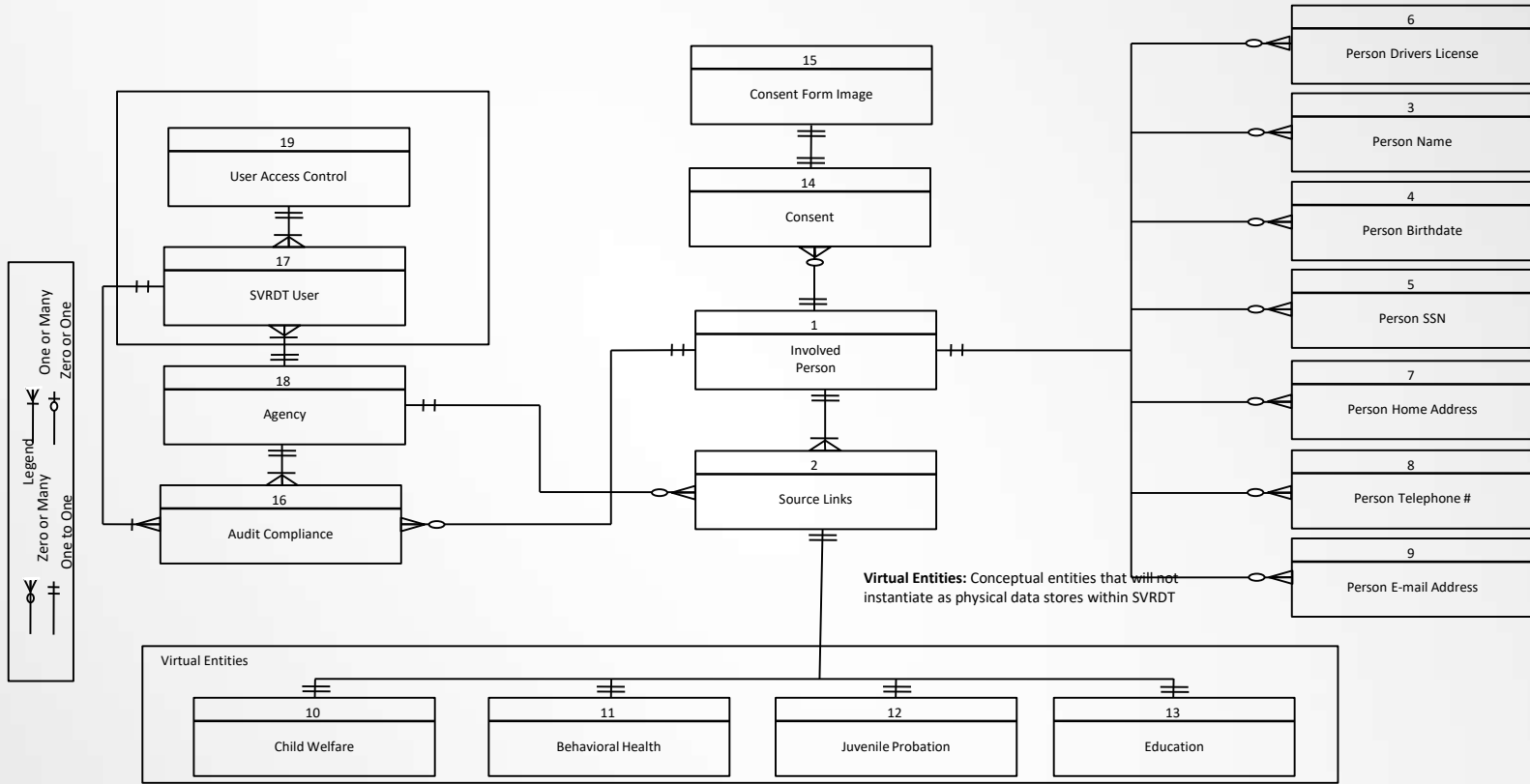
- Integrated Policy & Tech F/W
- Policy Admin/ Automation
- Multi-Agency Agreements
- Policy/Legal Rules Encoded
- No CMS data resident SVRDT
- No direct connect to SDE/CMS
- Access to ONLY Upfront Data
- Upfront data steward-SDE
- Access rules set by agency
- Access controlled by agency

Architecture & Design Principles Technology

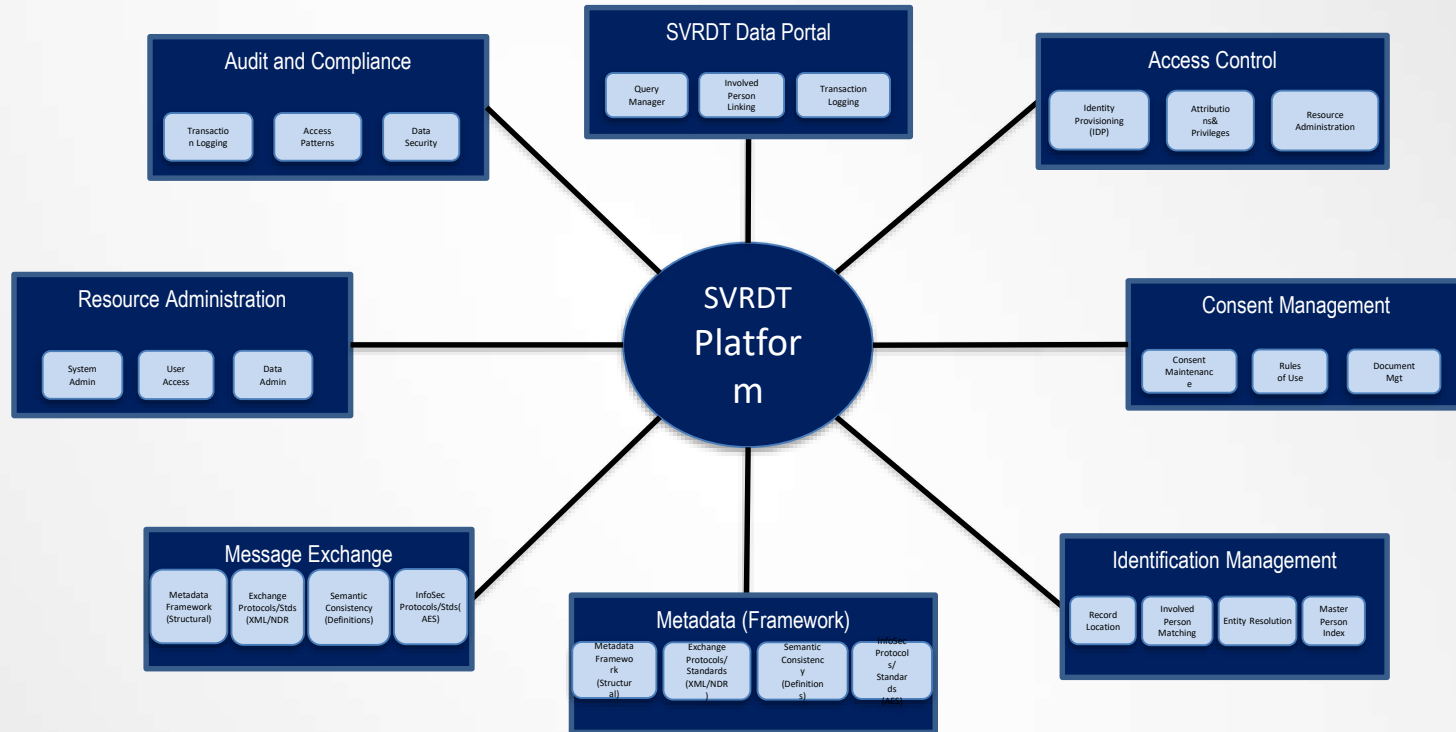
- SVRDT authenticates access
- Simplified Access Credentials
- Identity Providers—Counties
- Identity Provisioning shared
- Unique SVRDT Identifier (IPID)
- IPID Index to SDE Identifiers
- Transaction Process Centric
- Use Data to Request/Respond
- All activity thru SVRDT Portal
- All transaction details logged



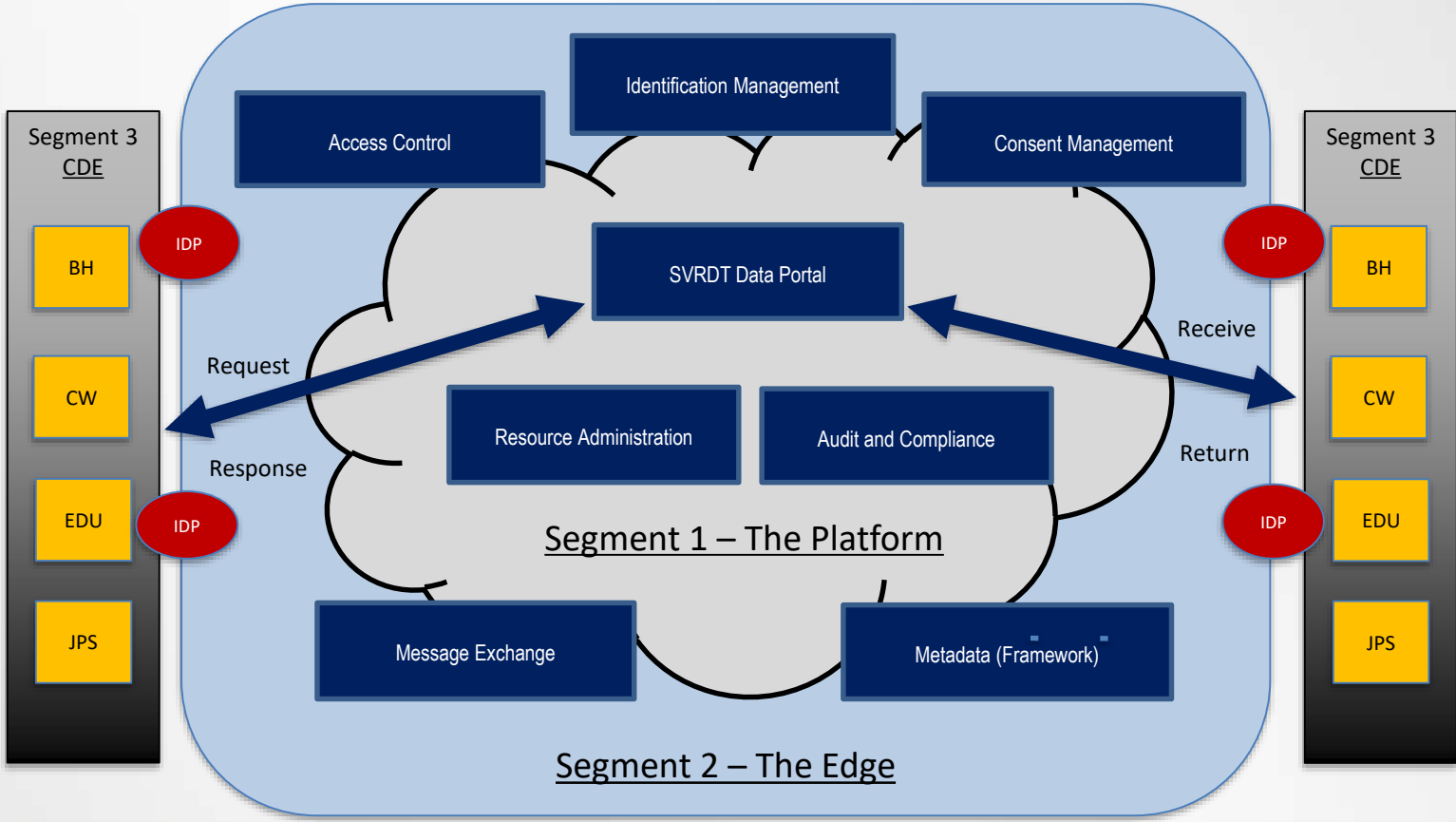
SVRDT Canonical Data Model



SVRDT Technical Services



SVRDT Architecture & Services Configuration



Silicon Valley Regional Data Trust and University of California, Santa Cruz: A Research-Practice Partnership

Rebecca London

Assistant Professor, Sociology



Santa Clara County
Office of Education



What is a Research-Practice Partnership?



- ◆ Long-term and mutually beneficial formalized collaboration between researchers and practitioners
- ◆ Produces relevant, actionable research
- ◆ Improves the use of research evidence in decision-making
- ◆ Requires attention to building trust, strong communication



Partnership Features

- ◆ Embedded in the development and the leadership structure of the SVRDT initiative
- ◆ Research Working Group establishing a governance structure, protocols for data access
 - Proposed research oversight group to vet requests and review products
 - Focus on equity-oriented research and ‘do no harm’ principles
 - Engaging stakeholders beyond the collaborators
 - Adding in other data sources
 - Attending to privacy, security and data access at the individual and school/district/agency levels



Three Part Research Agenda

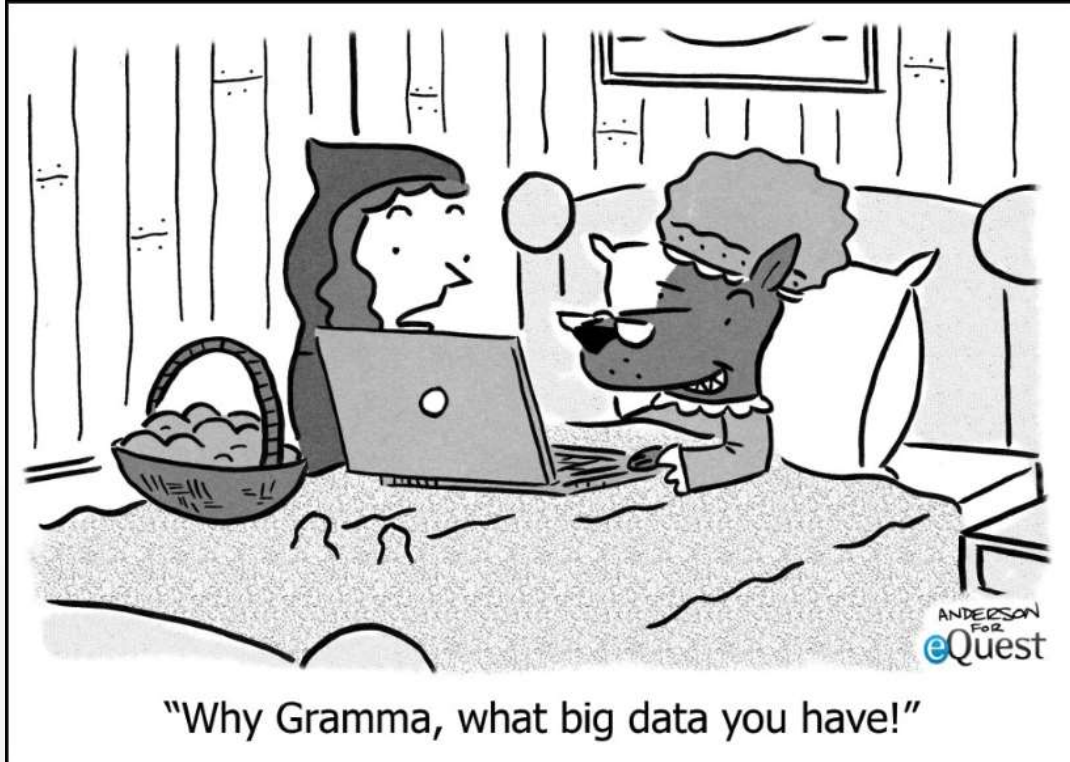
- ◆ Questions of practice: How is the SVRDT being used on the ground – by whom, for what, to what end?
- ◆ Analyses using the SVRDT data (social science questions)
 - ◆ Cross-sector or cross-agency questions posed by community partners
 - ◆ Questions posed by UCSC faculty, researchers, graduate students
 - ◆ Cycle of inquiry process
- ◆ Analyses about the SVRDT data (data science questions)
 - ◆ Addressing missing or incomplete data, matching across systems
 - ◆ Network analyses, spatial patterns



UCSC's Transdisciplinary Approach

- ◆ Collaboration across UCSC departments and divisions: Sociology, Education, Economics, Psychology, Computer Science, Applied Mathematics & Statistics, Data Management
- ◆ Graduate student training program and practicum
- ◆ Focus on the ethics of big data, collection and use
- ◆ Collaborations with
 - Community Engagement Collaborative
 - Santa Cruz Data Science Institute
 - Santa Cruz Institute for Social Transformation
 - Science & Justice Research Center
 - Center for Statistical Analysis in the Social Sciences





SVRDT Platform Demonstration

Marcy Lauck

Co-Founder and Co-Director SVRDT
SCCOE Director of Data Governance



Santa Clara County
Office of Education

